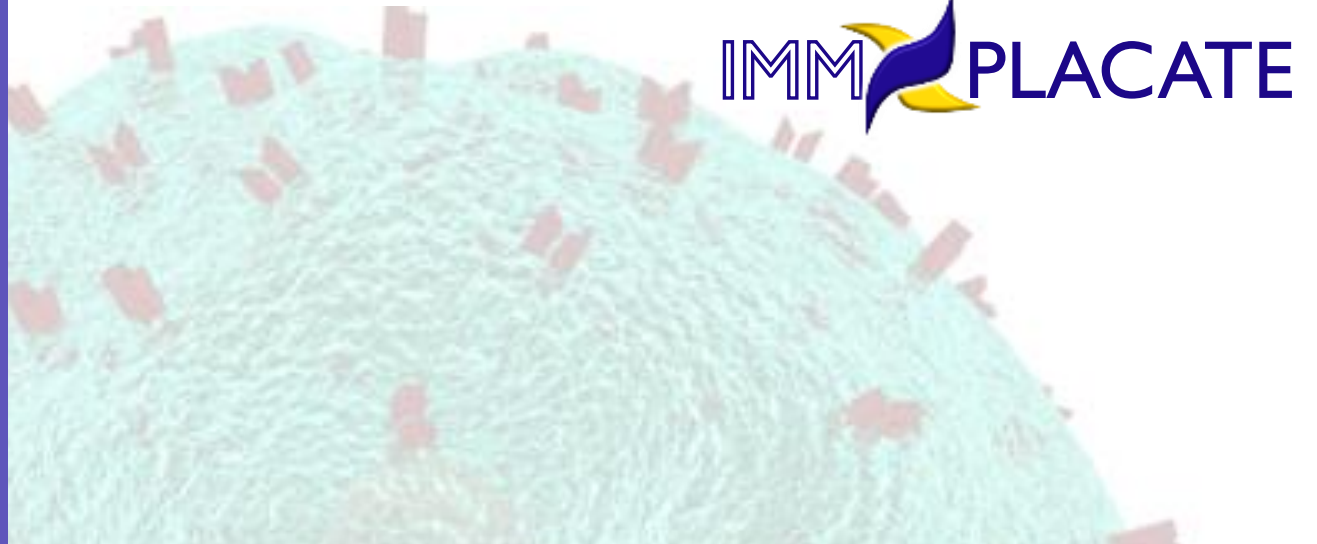


Educated Mesenchymal Cell (EMC) Therapies

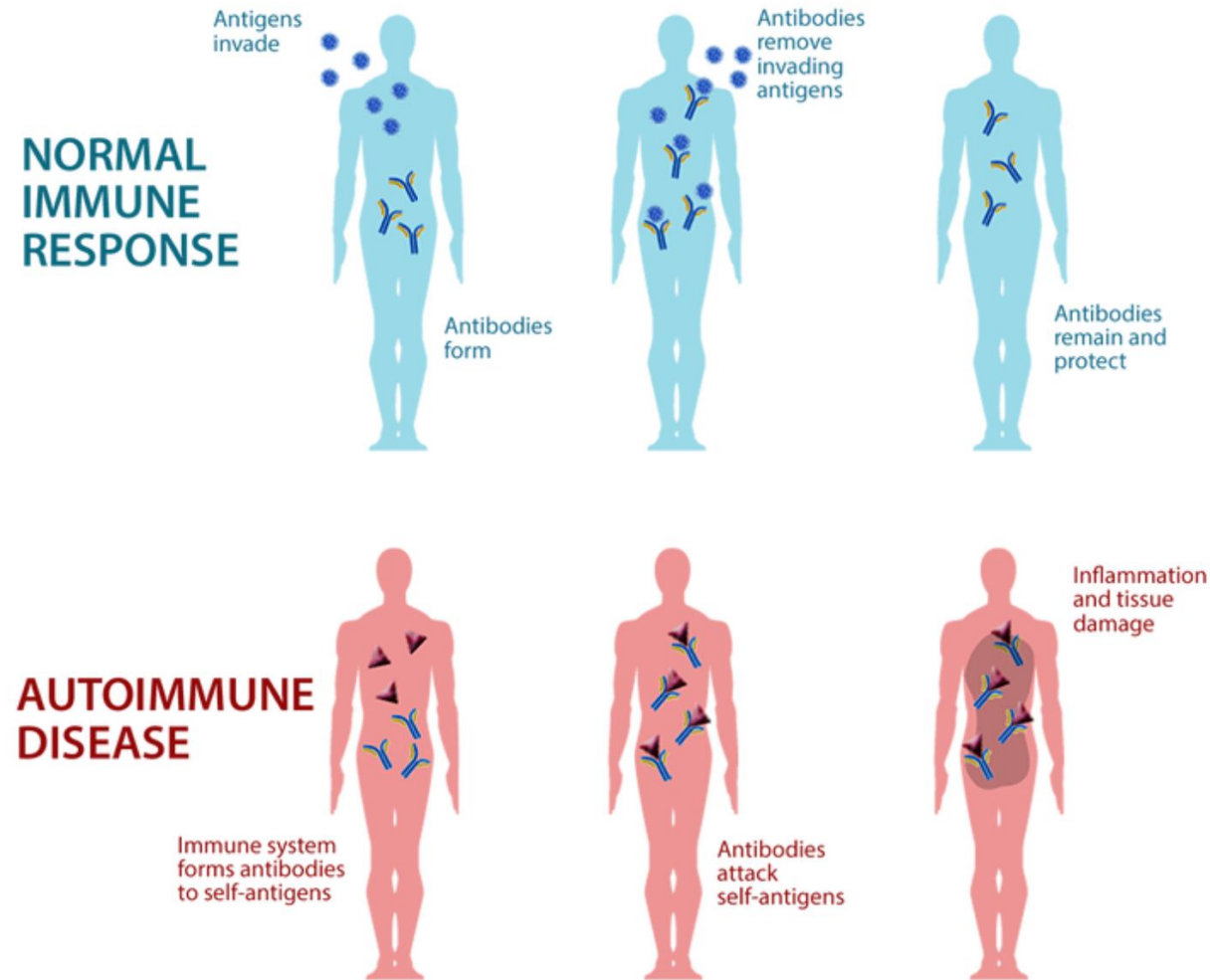
Harnessing the Power
of MSCs



PROBLEM

Lack of effective treatments for an overzealous immune response

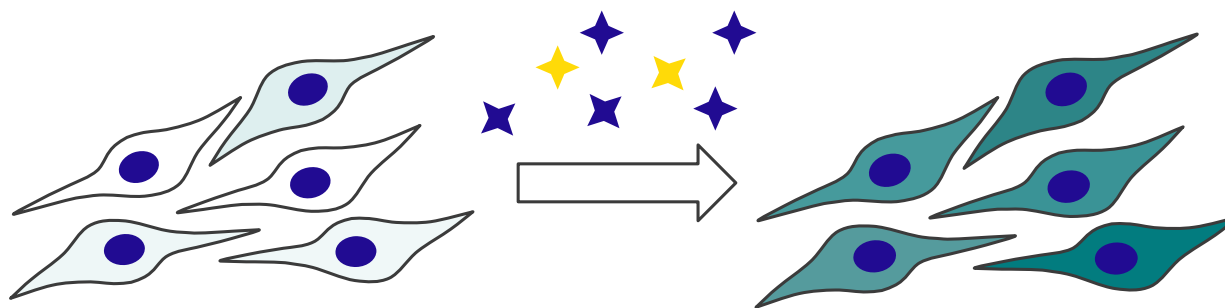
- **24 million people suffer** with autoimmune disease
- NIH estimates autoimmune disorders carry an **annual direct health care cost of ~\$100 billion**
- **Major gap & large opportunity** for new treatments & prevention
- **Lupus (SLE)**, rheumatoid arthritis, acute graft-vs-host disease, Crohn's Disease, sepsis



SOLUTION

Educated Mesenchymal Cell (EMC) therapy

Comprehensive, safe, immunosuppressive solution that addresses acute & chronic immune disorders



Pre-expanded, functionally insufficient, heterogeneous, naïve MSCs
(current state)

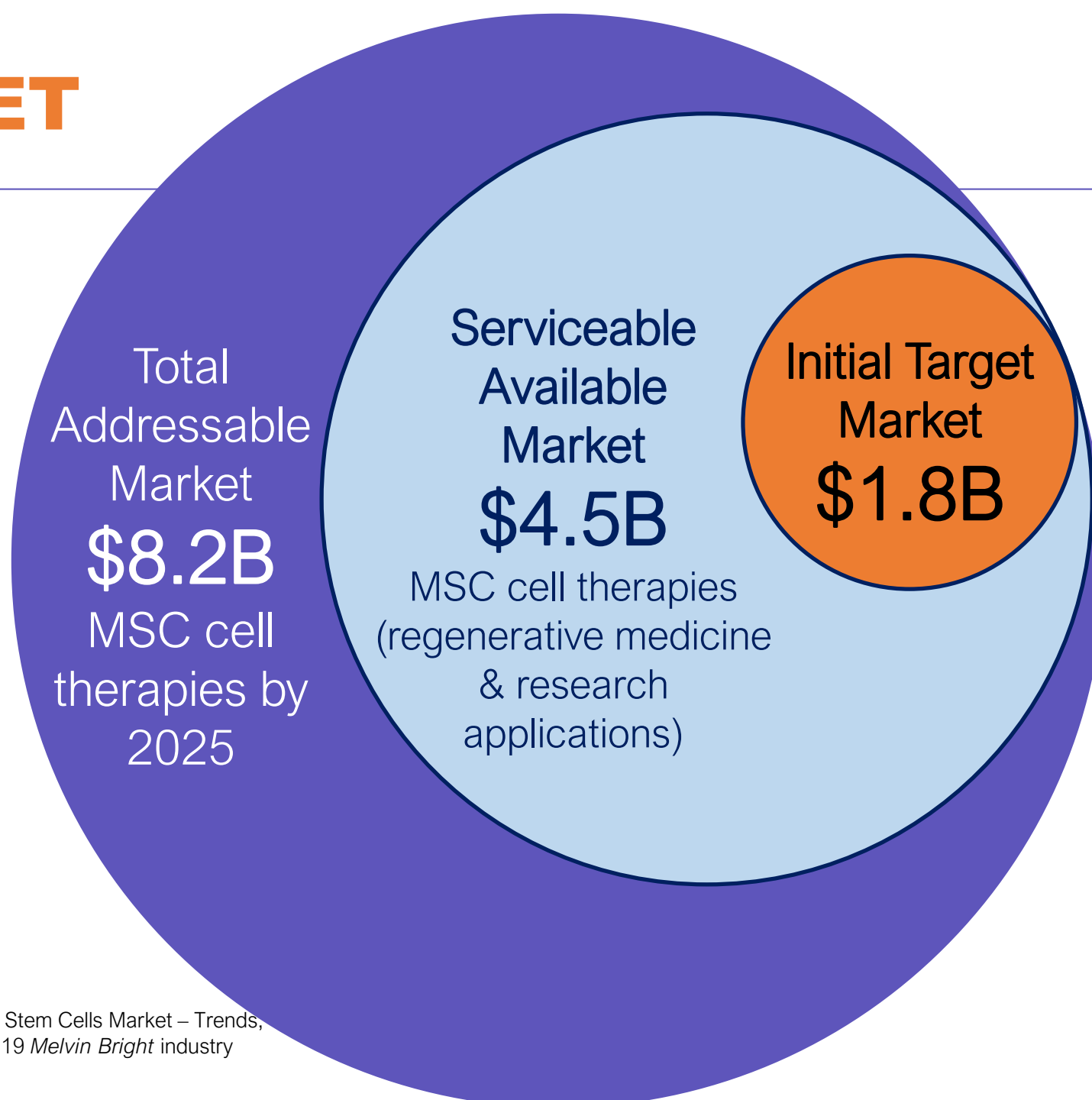
High-yield, allogeneic, functionally therapeutic, homogenous, immunosuppressive EMCs
(Immplacate)

COMPETITIVE ADVANTAGE

Implacate EMCs: Comprehensive, safe, immunosuppressive solution

FEATURE	BENEFIT
Educated EMCs	Highly immunosuppressive & effective
Pretreated & Fresher	Not over expanded with better recovery while maintaining functional capacity
Allogeneic	3 rd party cells available for use as and when needed
Functional Heterogeneity	Critical quality attributes (CQAs) enhance immunosuppressive response
Bio-banked Matched Cells	HLA matching
Functional Markers	Answers a major FDA concern
Hemocompatibility	<i>in vivo</i> thrombotic response suppressed

MARKET



Target Market includes:

- Initial indications: Lupus (SLE), Acute GvHD cell therapy
- Licensing & direct revenue from optimized research grade & GMP/clinical-grade cell manufacturing

BUSINESS MODEL EMC Therapy



Provider orders EMCs



GMP facility licenses technology



Partner CMO generates primed cells



EMCs administered to patient

MANAGEMENT & BOARD of DIRECTORS

Balanced business, science & clinical expertise



CEO & BOARD DIRECTOR

Anthony Curro, MBA

*30 years life sciences
senior executive experience*



BOARD DIRECTOR

Gordana Vunjak-Novakovic, PhD

*Director, Lab for Stem Cells & Tissue
Engineering, Columbia University*



BOARD DIRECTOR

Donna See, MBA, MPH

*CBO, Tara BioSystems, IP Expert,
Former VP, Allied Minds Venture Capital*



TECH. DEV. OFFICER

Seda Ayer, PhD

*Lead scientist specialized
knowledge stem cells*



DIR. of RESEARCH

Holly Wobma, MD, PhD

*Co-Founder & expert
researcher MSCs*



BOARD DIRECTOR

Sengho Jeon, MBA, MSc

CEO, Daewoong, Ltd.



BOARD DIRECTOR

Joseph Walker, MBA

*Former Vice Chairman of IB, JP
Morgan & Advisory Board CUMC*

STRATEGIC PARTNER | LEAD INVESTOR

Existing initial investment and in-kind contribution to Immplacate

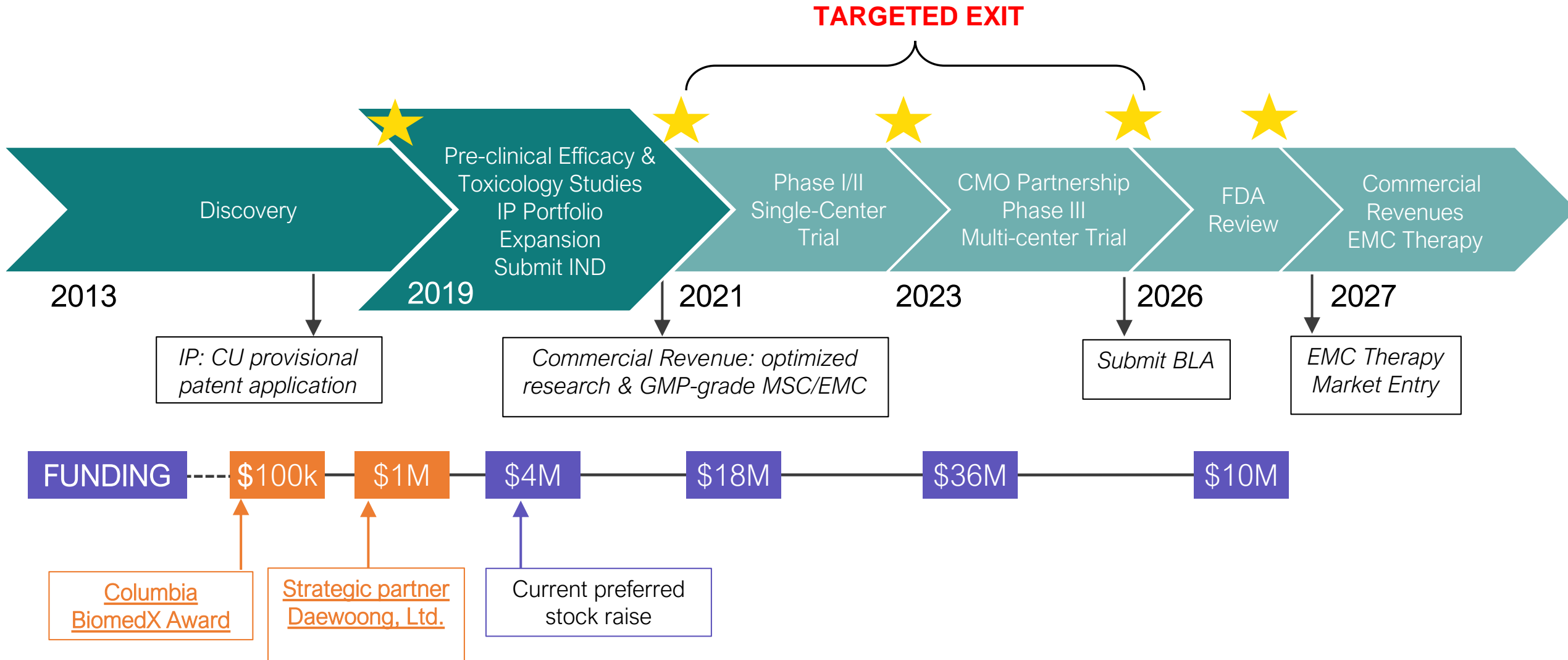


- \$1.6B USD annual revenue
- Established 1945, Seoul, South Korea
- Four SE Asia R&D centers
- Cell manufacturing expertise
- State-of-the-art GMP facility
- **\$1M investment** in Immplacate
- **In-kind contribution**, including access to proprietary IP and pluripotent stem cell-derived MSC line

PATH-TO-MARKET

★ = Value Inflection Point

\$4M investment fuels goals beyond IND submission



INVESTMENT OPPORTUNITY

For more info, contact
Anthony Curro, CEO
acurro@implacatehealth.com

- \$4M preferred stock offering
- Platform technology with strong IP portfolio
- Large market opportunity
- Well-balanced, experienced team
- \$1M from strategic partner lead investor with existing cell manufacturing expertise
- Attractive exit multiples

